



RFC EDITOR REPORT

IETF 83

Paris, France

March 2012

WHO IS THE RFC EDITOR

Heather Flanagan: RSE (rse@rfc-editor.org)

Nevil Brownlee: ISE (rfc-ise@rfc-editor.org)

RFC Production Center:

- Sandy Ginoza (sginoza@amsl.com)
- Alice Hagens (ahagens@amsl.com)
- Megan Ferguson (mferguson@amsl.com)
- Lynne Bartholomew (lbartholomew@amsl.com)
- Rebecca VanRheenen (rvanrheenen@amsl.com)
- Linda Butler (lbutler@amsl.com)
- RFC Editor (rfc-editor@rfc-editor.org)

Note: You may receive email from any of these addresses.

RFC EDITOR AT IETF 83

RFC Production Center Office Hours

Monday – Wednesday 9:00 – 4:30

RSE

Monday - Tuesday 1:30 – 4:00

ISE Office Hours

Monday & Wednesday: 9:30 – 11:30

Tools for Creating Internet-Drafts

Presented by: Alice Hagens

Sunday, March 25

Room: 241

SUBMISSION & PUBLICATION RATE

(NOVEMBER 2011 – FEBRUARY 2012)

Since IETF 82	Submissions 103*	Publications 124~2743 pgs
IETF	96	117
Working Group	82	97
Individual - AD Sponsored	14	20
IAB	2	1
IRTF	2	2
Independent	3	4

*Number of docs submitted and approved for publication
(i.e., does not include ISE Review, Timeout, etc.)

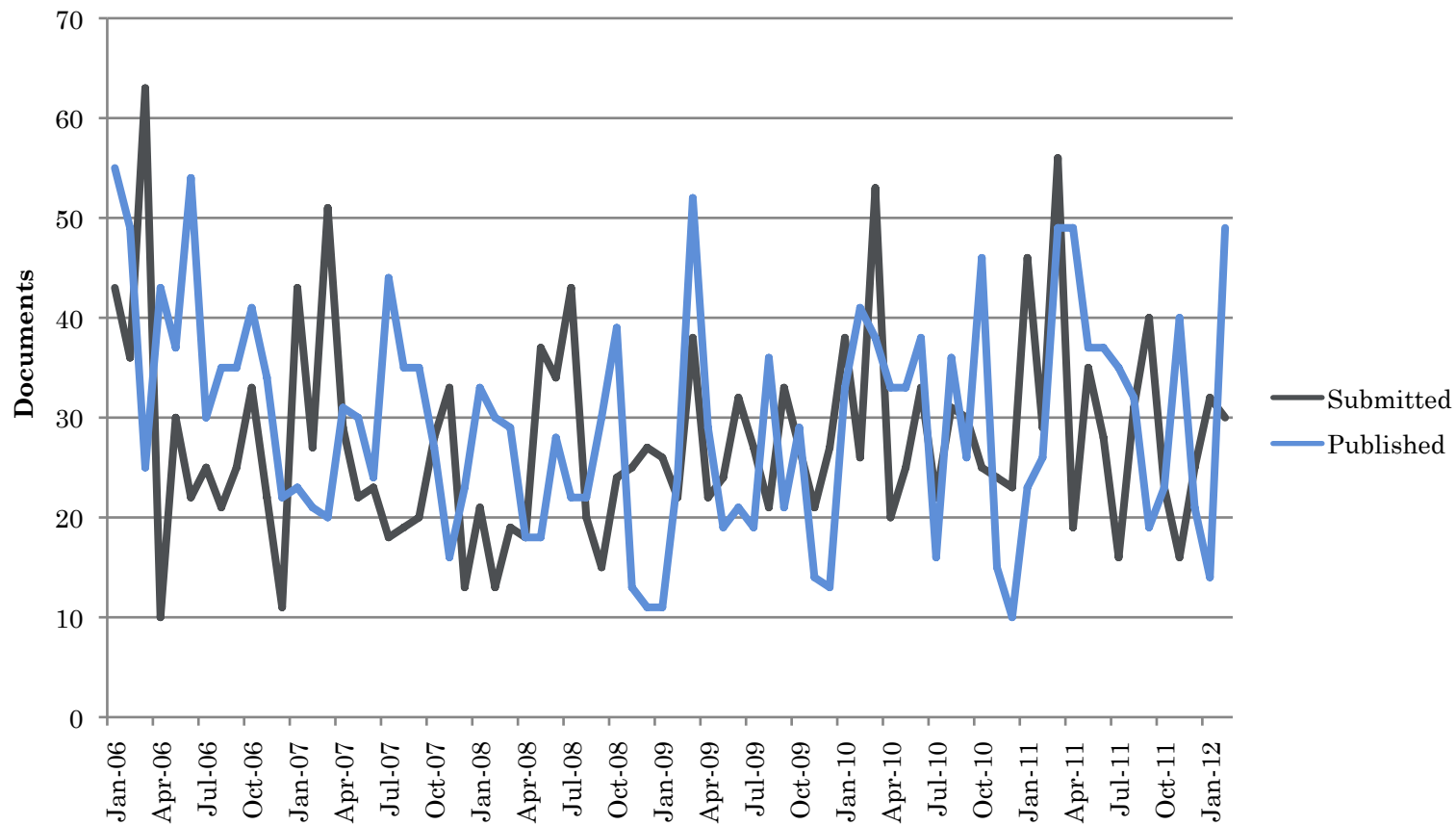


PUBLICATION RATE PER IETF

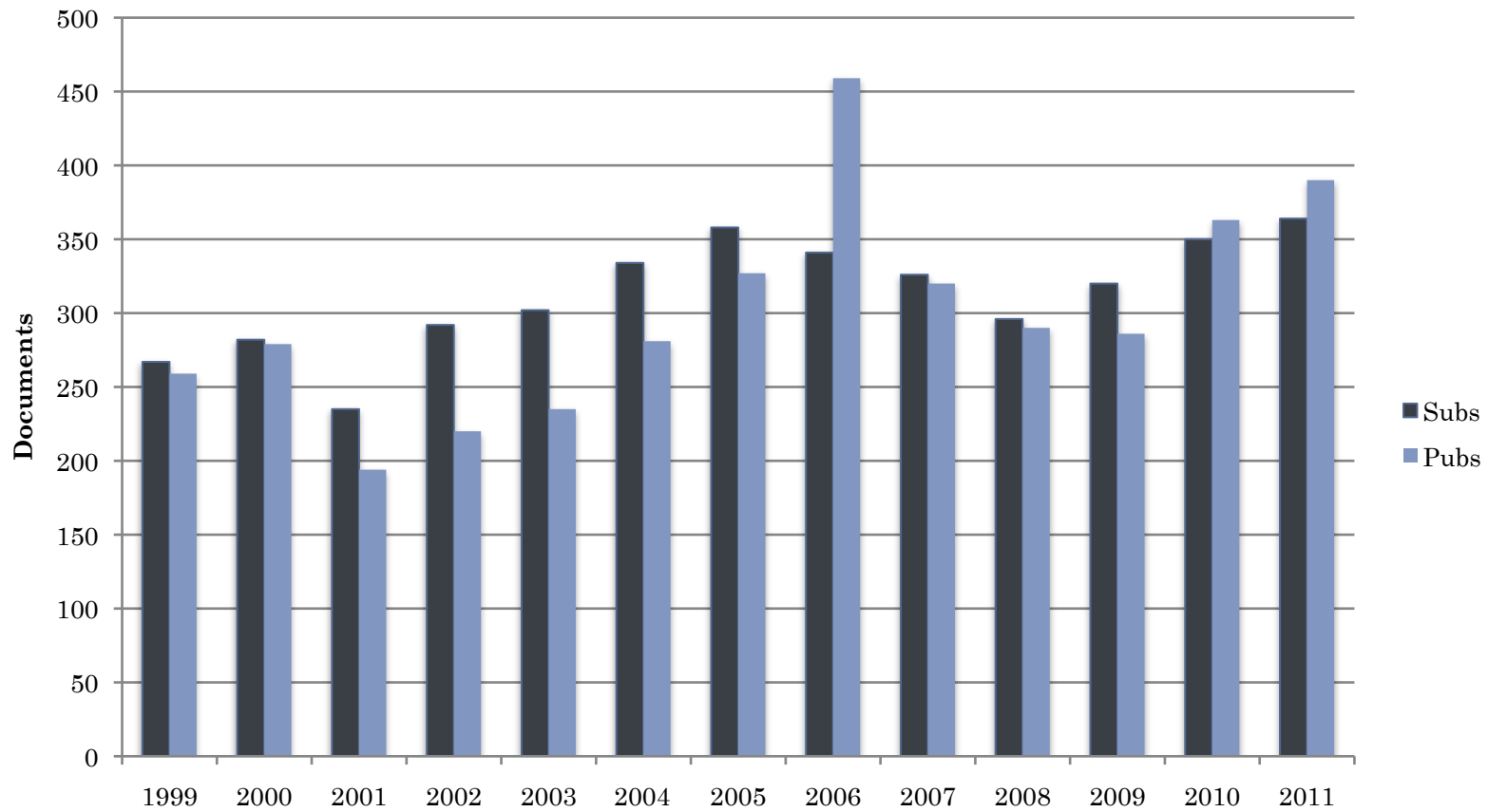
Reported @	~4-Month Period	Submitted per Month	Published per Month
IETF 75	Mar – Jun 2009	28.7	30
IETF 76	Jul – Oct 2009	28	24
IETF 77	Nov – Feb 2010	27.5	25
IETF 78	Mar – Jun 2010	32.25	35.5
IETF 79	Jul – Oct 2010	19.5	31
IETF 80	Nov – Feb 2011	28.25	16.75
IETF 81	Mar – Jun 2011	34.75	43
IETF 82	Jul – Oct 2011	28.5	27
IETF 83	Nov – Feb 2012	25.75	31

MONTHLY SUB AND PUB RATES

RFC Submissions & Publications



ANNUAL SUBS & PUBS



3/23/12 7

ANNUAL SUB & PUB RATES

Year	Subs	Pubs
1999	267	259
2000	282	279
2001	235	194
2002	292	220
2003	302	235
2004	334	281
2005	358	327
2006	341	459
2007	326	320
2008	296	290
2009	320	286
2010	350	363
2011	364	390
2012	87	75

3/23/12 8

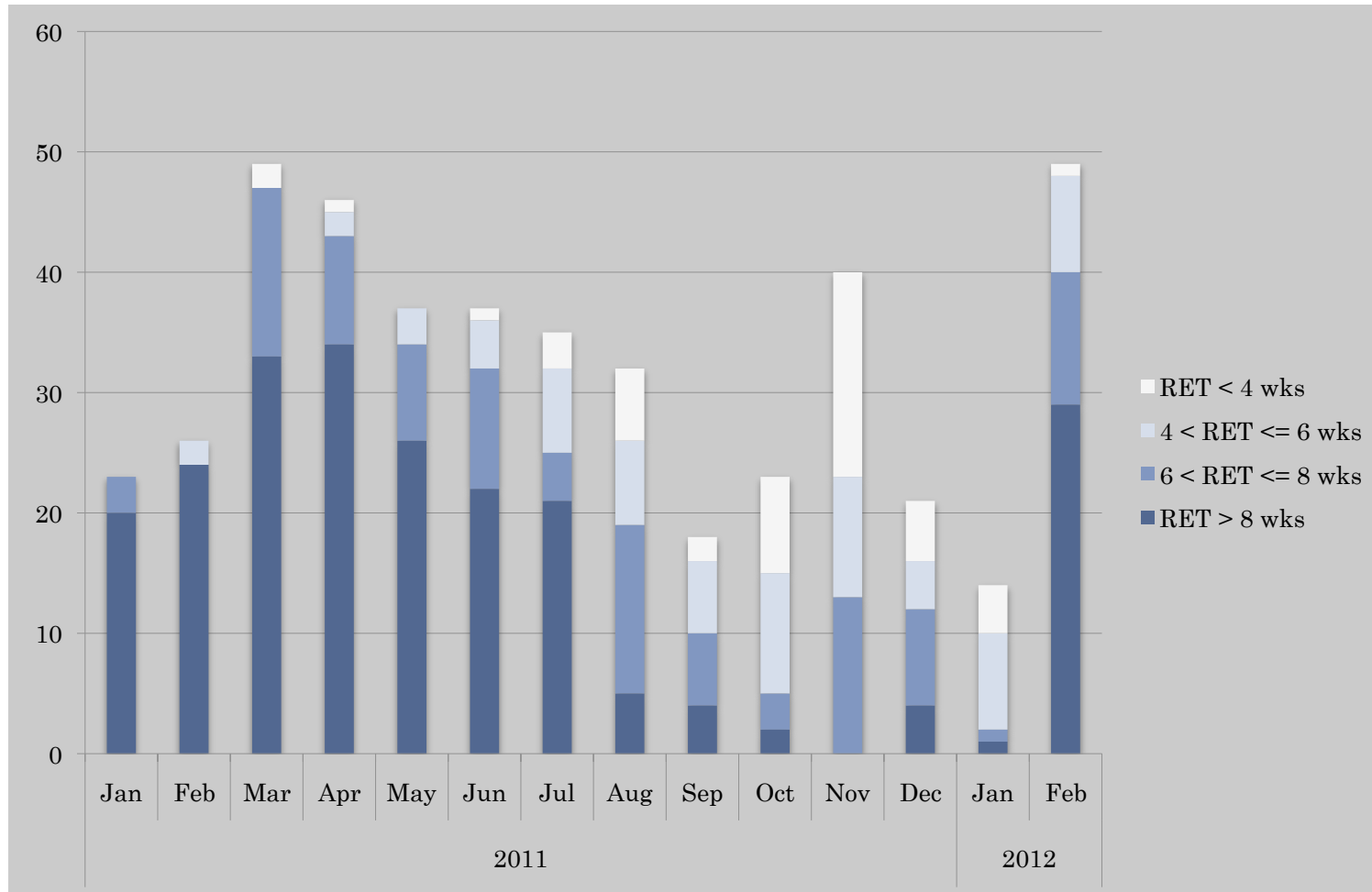
CURRENT RFC EDITOR QUEUE

(As of 19 March)

Current Q	IETF	Non-WG IETF	IAB	IRTF	Independent	Total	Med Wks in State
EDIT	19	4				23	1.4*
RFC-EDITOR	6	4				10	1.4
AUTH48	31	8	2	1	1	43	2.7
AUTH	2					2	0
IANA	1	1				2	0
MISSREF	28	2				30	25.4
TO					2	2	14.4
IESG	1					1	0
ISR					22	22	26.4
ISR-AUTH					21	21	44
TOTAL	88	19	2	1	46	157	

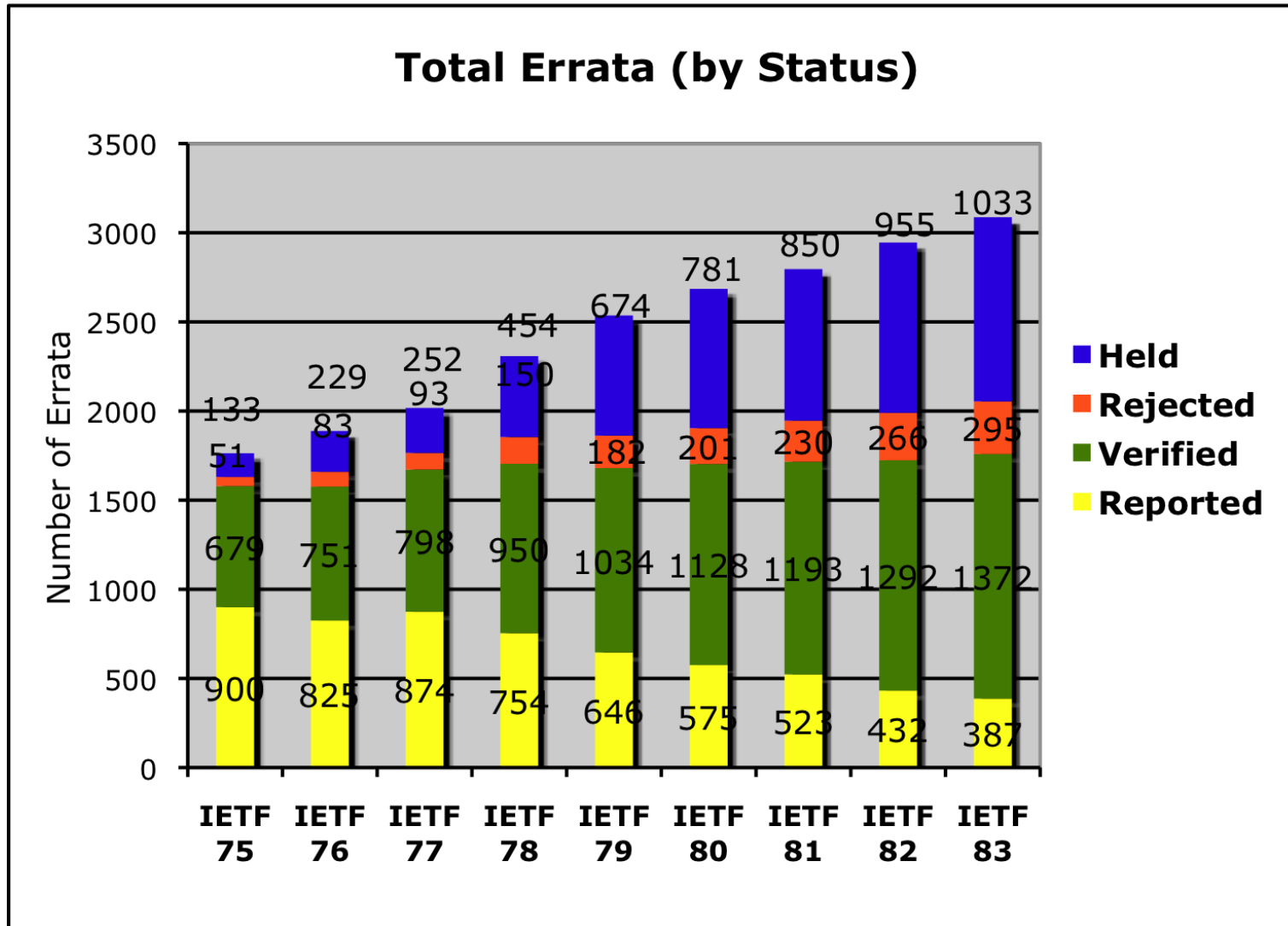
* This number is inaccurate because it includes documents that were not able to move forward; they referenced a document in MISSREF, i.e., what we call MISSREF 2G.

RPC PROCESSING TIMES



where RET = weeks in EDIT state + weeks in RFC-EDITOR state

TOTAL ERRATA OVER 9 IETFs



RFC EDITOR SITE UPDATES

- Sortable Queue
http://www.rfc-editor.org/current_queue.php
- Monthly State Change Summary
http://www.rfc-editor.org/monthly_report/state_change_2012.html
- Site Map
http://www.rfc-editor.org/rfc-ed_sitemap.html
- RFC Editor Contact Information
<http://www.rfc-editor.org/contacts.html>
- RFC Copyright Notices
<http://www.rfc-editor.org/copyright.html>
- RFC Editor at IETF 83
<http://www.rfc-editor.org/ietf.html>

CURRENT PROJECTS

- RFC Style Guide
 - 2 parts
 - RFC of more permanent guidelines
 - Website of recommended policies and drafted policies
 - Intent to move policies to RFC once solidified
- RFC Format Discussion
 - RFC Format BoF
 - Tuesday 5:10 – 6:10 / Room: Maillot
- RSE wiki
 - <http://www.rfc-editor.org/rse/wiki>

FUTURE PROJECTS

- Authors, Editors, and Contributors
- RFC Ed website
- Errata process review
- Scholarly indexing
- Stats and metrics
- Acronym review
- Short-lived references
- RFC Format (the “ASCII Problem”) and internationalization
- Images

Part-Time Editorial Staff

- IAOC approved temporary funding for additional editorial support in second half of 2011
- Support is greatly appreciated as
 - 2011: biggest submission rate in series history; extra help allowed RPC to keep up with processing times
 - 2012: transition to RSE; some RPC time will be spent on RSE projects

QUESTIONS?

- Please stop by and see us